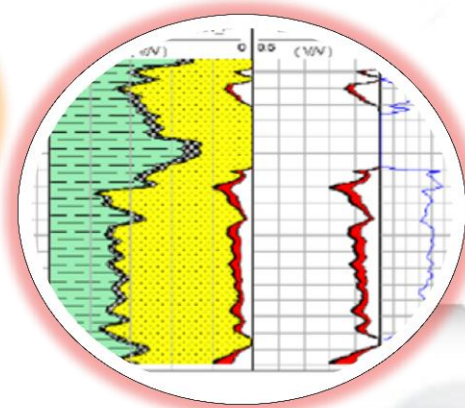
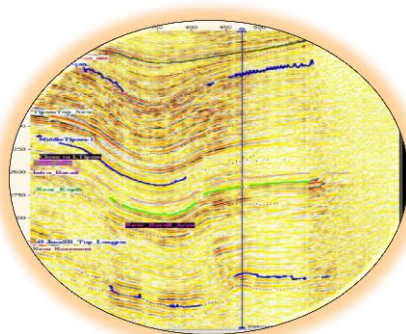


WELCOME

to
Discovered Small Field Workshop
on
26.04.2017
Venue : DGH



ऑयल इंडिया लिमिटेड

(भारत सरकार का उद्योग)

Oil India Limited

(A Government of India Enterprise)

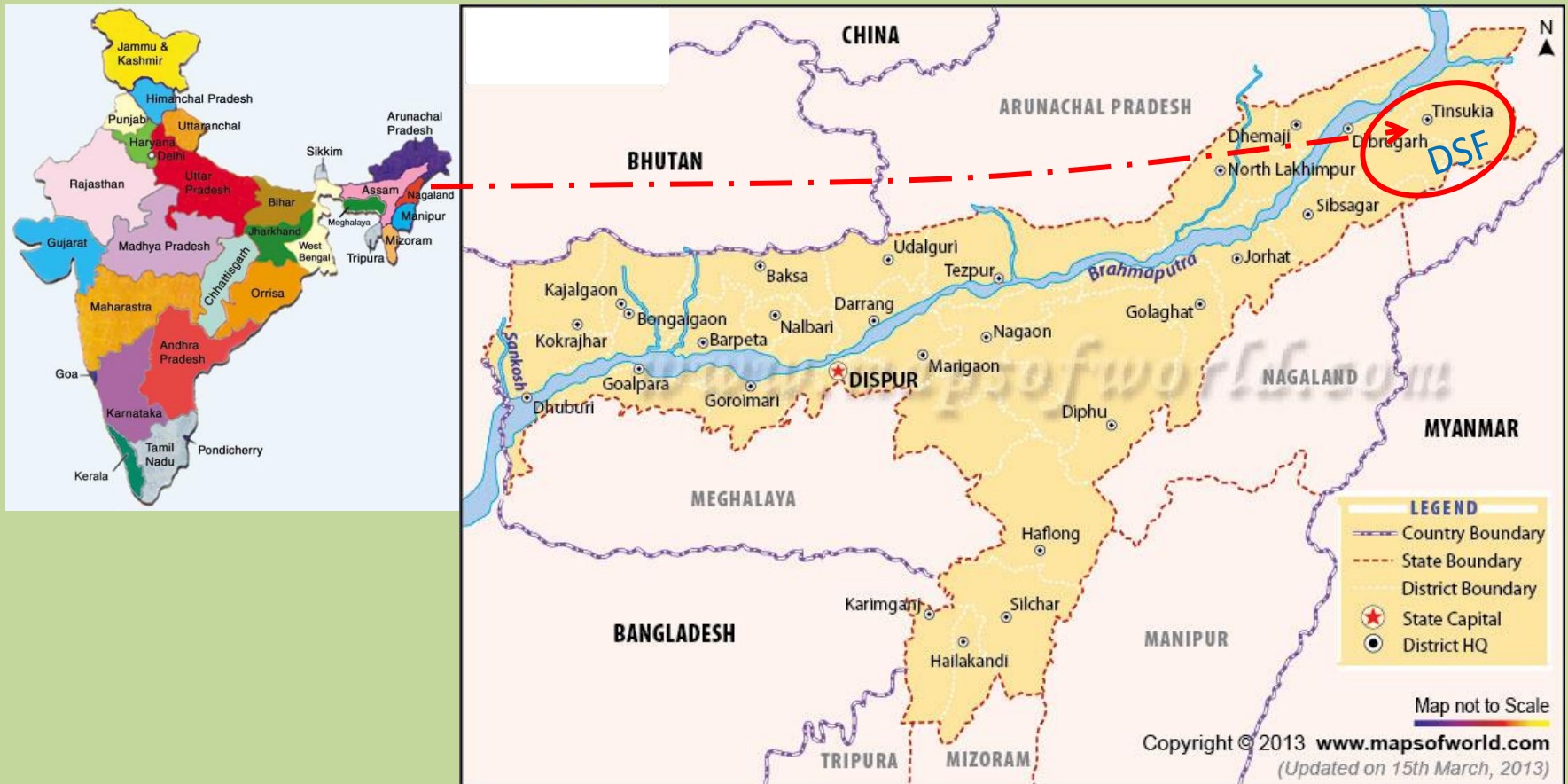
Presentation Coverage

- ❖ **Salient points of DSF pertaining to OIL**
- ❖ **PML related issues-Action taken so far**
- ❖ **Surface handling facilities**
- ❖ **Data transfer**

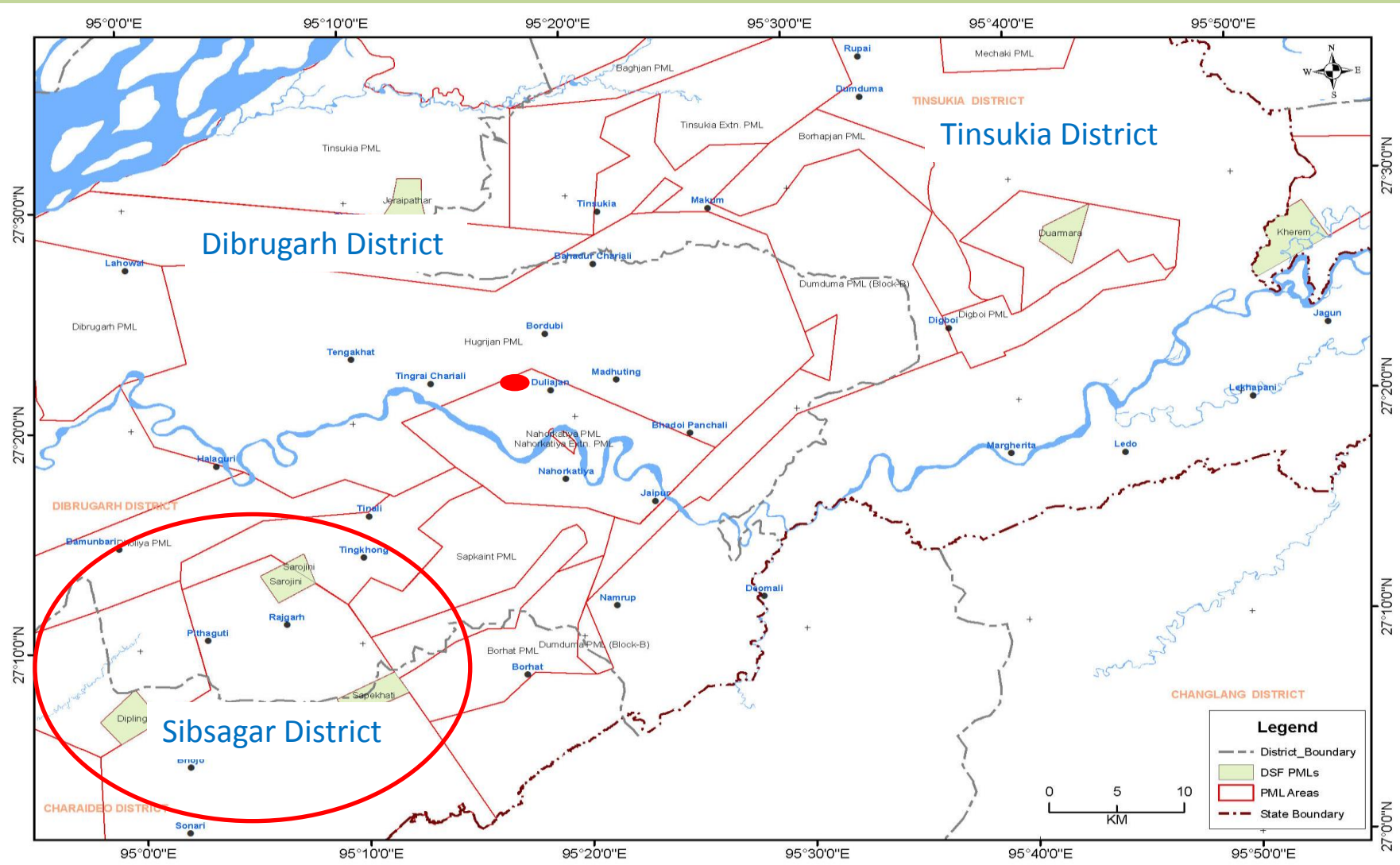
Highlights of DSF

- ❖ 'Discovered Small Fields (DSF) Bidding Round - 2016 was launched on 25 May 2016.
- ❖ 46 contract areas comprising of 67 oil and gas fields distributed across nine sedimentary basins.
- ❖ Out of the 46 contract areas, 26 are located on land, 18 are in shallow water and 2 in deep water offshore.
- ❖ Out of 134 e-bids for 34 contract area, finally, Cabinet Committee on Economic Affairs (CCEA) approved 31 contract areas under DSF.
- ❖ 4 onland contract areas consisting of 6 oil/ gas fields were related to OIL.

Geographical Position of DSF Fields in Assam & AP: OIL



Distribution of 6 DSF (4 Contract Area): OIL



Status of Consent Letter

- ❖ **Consent letter was submitted for Dipling Cluster, Jeraipathar and Duarmara to Govt of Assam on 13.04.2017.**
- ❖ **Consent letter was submitted for Kherem DSF block to Govt of Arunachal Pradesh on 13.04.2017.**
- ❖ **PML application was submitted to Govt. of Assam and AP for all DSF areas on 13.04.2017.**
- ❖ **Copy of the Consent letters as well as maps and annexures submitted to Awardees, DGH and MoPNG.**



Details of PML of DSF

DSF Area (OIL)	Fields	Area (sq. km.)	Existing PML(s)	Existing PML(s) Validity
DIPLING Cluster (Tota 28.15 sq. km)	Dipling	10.08	Moran	09.01.2041
	Sapekhati	9.28	Moran Ext.	31.10.2026
	Sarojani	8.79	Dumduma (Block-A)	25.11.2029
			Moran Ext.	31.10.2026
DUARMARA	Duarmara	8.91	Dumduma (Block-C)	25.11.2029
JERAIPATHAR	Jeraipathar	10.05	Tinsukia	16.12.2021*
			Chabua	11.06.2022
KHEREM	Kherem	16.45	Ningru Ext.	Not available

* Applied for extension as the PML validity was less than 5 yrs as per DGH directives.



Awarded DSF Areas to Operators

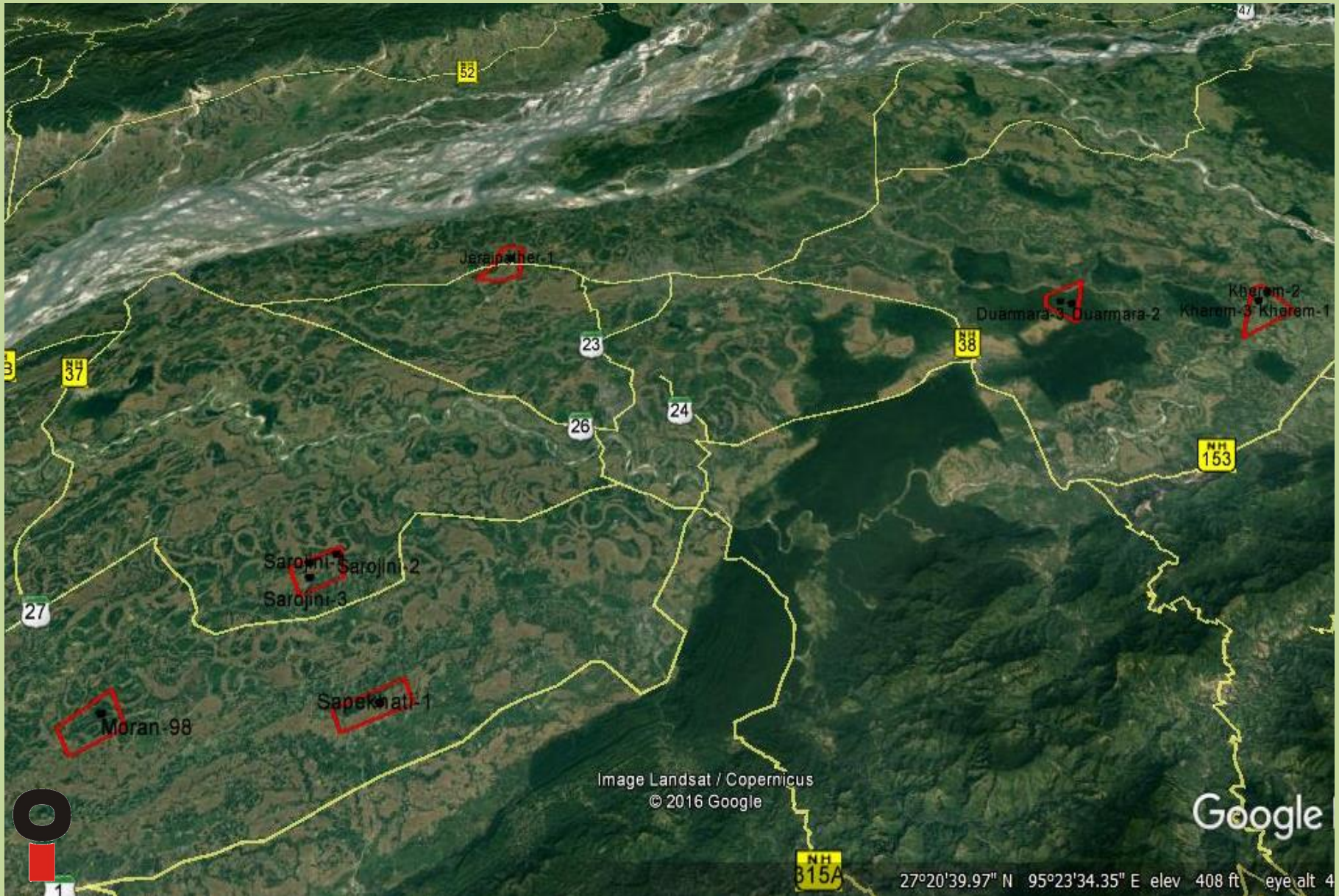
SI No.	Transferred to DSF	DSF PML Area (Sqkm)	Company/Consortium
1	Duarmara DSF PML (AA/ONDSF/Duarmara/2016)	8.91	1. Oilmax Energy Pvt Ltd.
2	Dipling Cluster DSF PML (AA/ONDSF/Dipling Cluster/2016) (Sarojini Block) (Sapekhati: 9.28 + Dipling: 10.08 + Sarojini: 8.79)	28.15	1. Ramayna Ispat Private Limited 2. Bdn Enterprises Pvt. Ltd 3. Duggar Fiber Pvt Ltd. 4. Mohendra Infratech Pvt Ltd
3	Jeraipathar DSF PML (AA/ONDSF/Jeraipathar/2016)	10.05	1. Indian Oil Corporation Limited
4	Kherem DSF PML (AA/ONDSF/KHEREM/2016)	16.45	1. Hindustan Oil Exploration Company Limited. 2. Oil India Limited 3. Prize Petroleum Company Limited
	Total Area (Sqkm)	63.56	



**PRODUCTION FACILITIES
&
INFRASTRUCTURES NEAR DSF**



Road Map of DSF Areas (OIL)



DSF from Nearest OIL Setup

Assam

Field

Facility

Dipling

10 km

Moran
OCS

Sarojini-1

10 km

Rajgarh
WHS*

Sapekhati-1

16 km

Duarmara

18 km

Digboi
BUS

Jeraipathar-1

8 km

DIAN
WHS

Arunachal Pradesh

Field

Facility

Kherem

18
km

Bordumsa
Terminal*

OCS: Oil Collecting Station

WHS: Well head setup

BUS: Bowser Unloading Station

** Rajgarh WHS (only land available) and Bordumsa (only storage tank) are not currently in operation.*

Field-DIPLING

- No. of well Drilled – 1
- Nearest Surface Facility- Moran OCS

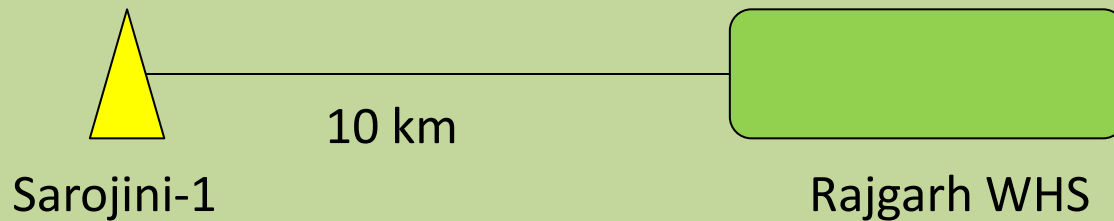


- ☐ Moran OCS is in operation where oil & gas is brought through pipeline for processing.



Field - SAROJINI

- No. of well Drilled- 3
- Nearest Surface Facility- Rajgarh Well Head Set up (WHS)

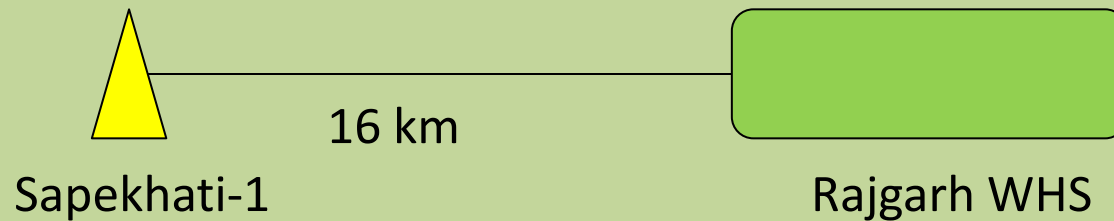


- ❑ Only land is available at Rajgarh WHS.



Field - SAPEKHATI

- No. of well Drilled - 1
- Nearest Surface Facility- Rajgarh Well Head Set up (WHS)



- ❑ Only land is available at Rajgarh WHS.



Field - DUARMARA

- No. of well Drilled - 3
- Nearest Surface Facility- Digboi Bowser Unloading Station

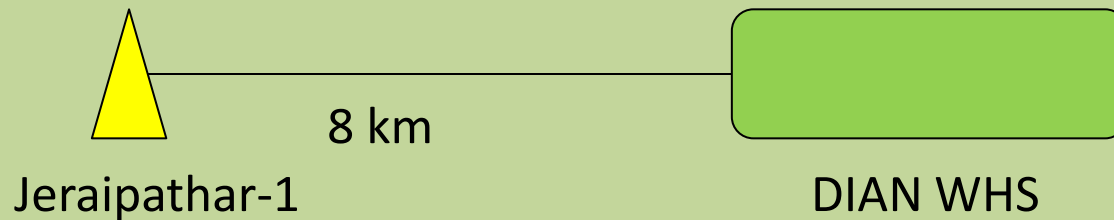


- Digboi Bowser Unloading Station is in Operation.
- Crude Oil can be delivered to the Station.



Field - JERAIPATHAR

- No. of well Drilled-1
- Nearest Surface Facility- DIAN Well Head Set Up (WHS)

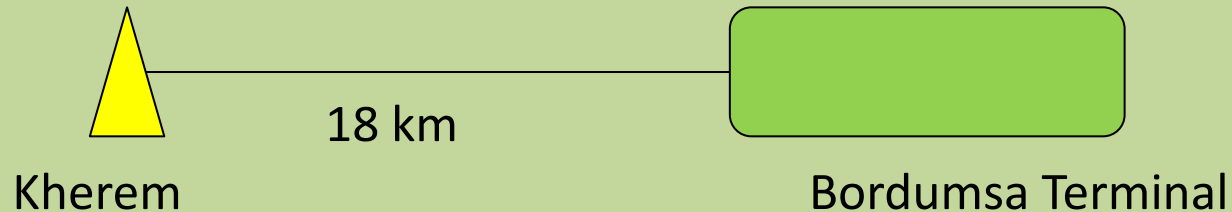


- DIAN WHS is in operation (2 wells). Bowser loading facilities available.
- Nearest station to unload crude oil is Dikom bowser unloading station at a distance of 40 km(approx.)



Field - KHEREM

- No. of well Drilled - 3
- Nearest Surface Facility - Bordumsa Terminal



- Bordumsa Terminal is not in Operation (only storage tank).
Bowser can be loaded by gravity.
- Nearest station to unload crude oil is Digboi bowser unloading station at a distance of 55 km(approx.)
- The processed gas can be brought to FGGS Kusijan by two options:
 - a) Via Jagun and Digboi \simeq 60 km
 - b) Via Bordumsa and Digboi \simeq 50 km



Data Transfer

- ❖ **The related Geoscientific data (viz. Seismic, WCR, Well logs etc.) handed over to DGH.**



Thank You

